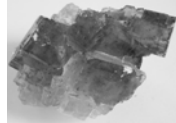


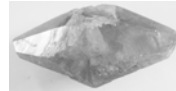
How to Identify Rocks and Minerals



epidote



fluorite



calcite



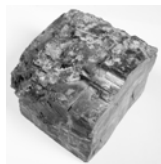
gypsum



quartz



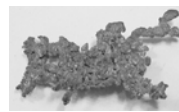
pyrite



galena



fluorite



copper

By Jan C. Rasmussen
2009

Arizona Historical Society

1300 N. College Ave.

Tempe, AZ 85281

(480) 929-0292

www.arizonahistoricalsociety.org

Donations for reproduction from:

Freeport McMoRan Copper & Gold Foundation
Friends of the Arizona Mining & Mineral Museum
Wickenburg Gem & Mineral Society



Let's make history!

ALPHABETICAL LIST OF ROCKS & MINERALS IN KIT

See final pages of book for color photographs of rocks and minerals.

MINERALS:

Apatite*	5
Azurite (dark blue)	12
Barite	15
Biotite	39
Bornite (peacock tarnish)	23
Calcite	3
Chalcopyrite (brassy)	14
Chrysocolla (blue-green)	11
Copper (refined)	30
Corundum*	9
Cuprite*	25
Diamond*	10
Dolomite*	40
Fluorite	4
Galena (metallic)	16
Garnet	18
Glauberite pseudomorph	31
Gold*	29
Graphite*	37
Gypsum	2
Halite (table salt)	24
Hematite	17
Hornblende	35
Limonite (Goethite)	26
Magnetite	19
Malachite (green)	21
Muscovite (mica group)	22
Orthoclase (feldspar group)	6
Peridot	28
Pyrite (brassy)	27
Quartz, var. amethyst	34
Quartz, var. chalcedony	13
Quartz	7
Quartz, var. rose	33
Serpentine	20
Sphalerite*	38
Sulfur	32
Talc	1
Topaz*	8
Tourmaline*	36

ROCKS:

Apache Tear	50
Basalt	51
Breccia	74
Coal	77
Conglomerate	73
Diatomite	78
Gneiss	64
Granite	57
Limestone	71
Marble	62
Metaconglomerate*	65
Obsidian	54
Perlite	53
Phyllite	66
Pumice	52
Quartzite*	60
Rhyolite	56
Sandstone	70
Schist	61
(Serpentinite)*	(20)
Shale*	75
Silicified Wood	76
(Quartz, var. chert)	
Slate	63
Travertine (onyx)	72
Tuff	55

NUMERICAL LIST OF ROCKS & MINERALS IN KIT

See final pages of book for color photographs of rocks and minerals.

MINERALS:

- 1 Talc
- 2 Gypsum
- 3 Calcite
- 4 Fluorite
- 5 Apatite*
- 6 Orthoclase (feldspar group)
- 7 Quartz
- 8 Topaz*
- 9 Corundum*
- 10 Diamond*
- 11 Chrysocolla (blue)
- 12 Azurite (dark blue)
- 13 Quartz, var. chalcedony
- 14 Chalcopyrite (brassy)
- 15 Barite
- 16 Galena (metallic)
- 17 Hematite
- 18 Garnet
- 19 Magnetite
- 20 Serpentine
- 21 Malachite (green)
- 22 Muscovite (mica group)
- 23 Bornite (peacock tarnish)
- 24 Halite (table salt)
- 25 Cuprite
- 26 Limonite (Goethite)
- 27 Pyrite (brassy)
- 28 Peridot
- 29 Gold*
- 30 Copper (refined)
- 31 Glauberite pseudomorph
- 32 Sulfur
- 33 Quartz, var. rose
- 34 Quartz, var. amethyst
- 35 Hornblende*
- 36 Tourmaline*
- 37 Graphite*
- 38 Sphalerite*
- 39 Biotite*
- 40 Dolomite*

IGNEOUS ROCKS:

- 50 Apache Tear
- 51 Basalt
- 52 Pumice
- 53 Perlite
- 54 Obsidian
- 55 Tuff
- 56 Rhyolite
- 57 Granite

METAMORPHIC ROCKS:

- 60 Quartzite*
- 61 Schist
- 62 Marble
- 63 Slate*
- 64 Gneiss
- 65 Metaconglomerate*
- 66 Phyllite
- (20) (Serpentine)*

SEDIMENTARY ROCKS:

- 70 Sandstone
- 71 Limestone
- 72 Travertine (onyx)
- 73 Conglomerate
- 74 Breccia
- 75 Shale
- 76 Silicified Wood
(Quartz, var. chert)
- 77 Coal
- 78 Diatomite

*= not generally in kits. Minerals numbered 8-10, 25, 29, 35-40 are listed for information only.